

**LILRA5 Antibody (N-term)**  
**Affinity Purified Rabbit Polyclonal Antibody (Pab)**  
**Catalog # AP11643a**

**Specification**

---

**LILRA5 Antibody (N-term) - Product Information**

Application	WB,E
Primary Accession	<a href="#">A6N173</a>
Other Accession	<a href="#">NP_871715.1</a> , <a href="#">NP_067073.1</a> , <a href="#">NP_871714.1</a> , <a href="#">NP_870994.1</a>
Reactivity	Human
Host	Rabbit
Clonality	Polyclonal
Isotype	Rabbit IgG
Calculated MW	32755
Antigen Region	56-85

**LILRA5 Antibody (N-term) - Additional Information**

**Gene ID** 353514

**Other Names**

Leukocyte immunoglobulin-like receptor subfamily A member 5, CD85 antigen-like family member F, Immunoglobulin-like transcript 11, ILT-11, Leukocyte immunoglobulin-like receptor 9, LIR-9, CD85f, LILRA5, ILT11, LILRB7, LIR9

**Target/Specificity**

This LILRA5 antibody is generated from rabbits immunized with a KLH conjugated synthetic peptide between 56-85 amino acids from the N-terminal region of human LILRA5.

**Dilution**

WB~~1:1000

E~~Use at an assay dependent concentration.

**Format**

Purified polyclonal antibody supplied in PBS with 0.09% (W/V) sodium azide. This antibody is purified through a protein A column, followed by peptide affinity purification.

**Storage**

Maintain refrigerated at 2-8°C for up to 2 weeks. For long term storage store at -20°C in small aliquots to prevent freeze-thaw cycles.

**Precautions**

LILRA5 Antibody (N-term) is for research use only and not for use in diagnostic or therapeutic procedures.

**LILRA5 Antibody (N-term) - Protein Information**

**Name** LILRA5

**Synonyms** ILT11, LILRB7, LIR9

**Function** May play a role in triggering innate immune responses. Does not seem to play a role for any class I MHC antigen recognition.

**Cellular Location**

Cell membrane; Single-pass type I membrane protein

**Tissue Location**

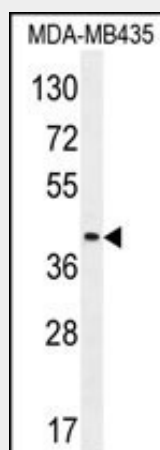
Expressed mostly in tissues of the hematopoietic system, including bone marrow, spleen, lymph node and peripheral leukocytes. Among leukocytes, monocytes and neutrophils express the highest level. Expressed in CD14+ monocytes, but not in T-cells, B- cells or natural killer (NK) cells (at protein level)

**LILRA5 Antibody (N-term) - Protocols**

Provided below are standard protocols that you may find useful for product applications.

- [Western Blot](#)
- [Blocking Peptides](#)
- [Dot Blot](#)
- [Immunohistochemistry](#)
- [Immunofluorescence](#)
- [Immunoprecipitation](#)
- [Flow Cytometry](#)
- [Cell Culture](#)

**LILRA5 Antibody (N-term) - Images**



LILRA5 Antibody (N-term) (Cat. #AP11643a) western blot analysis in MDA-MB435 cell line lysates (35ug/lane). This demonstrates the LILRA5 antibody detected the LILRA5 protein (arrow).

**LILRA5 Antibody (N-term) - Background**

The protein encoded by this gene is a member of the leukocyte immunoglobulin-like receptor (LIR) family. LIR family members are known to have activating and inhibitory functions in leukocytes. Crosslink of this receptor protein on the surface of

monocytes has been shown to induce calcium flux and secretion of several proinflammatory cytokines, which suggests the roles of this protein in triggering innate immune responses. This gene is one of the leukocyte receptor genes that form a gene cluster on the chromosomal region 19q13.4. Four alternatively spliced transcript variants encoding distinct isoforms have been described. [provided by RefSeq].

#### **LILRA5 Antibody (N-term) - References**

Mosbrugger, T.L., et al. J. Infect. Dis. 201(9):1371-1380(2010)  
Jones, D.C., et al. Eur. J. Immunol. 39(11):3195-3206(2009)  
Shiroishi, M., et al. J. Biol. Chem. 281(28):19536-19544(2006)  
Borges, L., et al. Blood 101(4):1484-1486(2003)  
Wende, H., et al. Immunogenetics 51 (8-9), 703-713 (2000) :